



Business Intelligence for Financial Services

### Complete Enterprise Performance Management for Financial Services

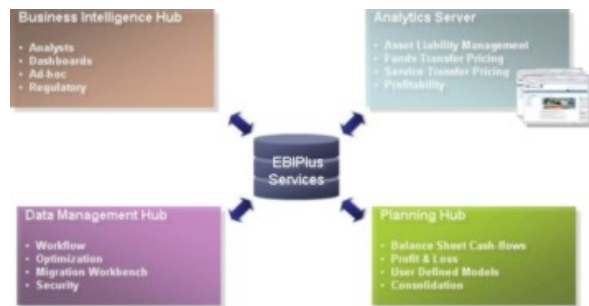
EBIPlus™ 11i is the next generation performance & risk management solution for the financial services industry. It provides pre-configured business rules and reports designed to meet current best practice for the industry.

EBIPlus™ has pre-built interfaces to the Oracle Financial Data Model (and associated OFSA suite of products) and the Oracle Business Intelligence Server. EBIPPlus™ is repository independent enabling you to incorporate data from all areas of your organization into your EBIPPlus™ reporting and processing hub.

### EBIPlus™ Functional Overview

The EBIPPlus™ 11i suite is made up of a number of discrete functional areas including:

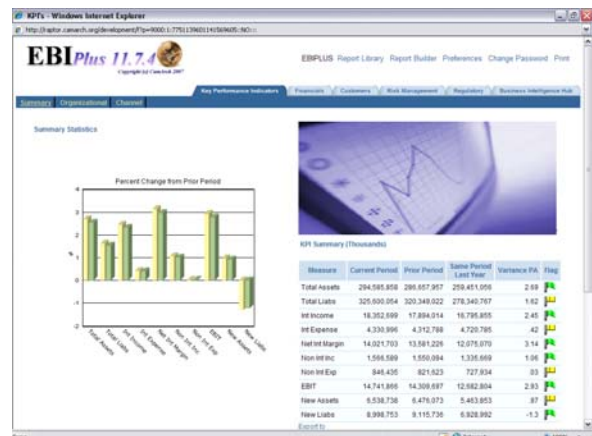
1. Business Intelligence Hub
2. Analytics Server
3. Planning Hub
4. Foundation Services
5. Rapid Business Accelerators
6. Applications Migration Workbench



EBIPPlus 11i Release 7.4 Footprint

### EBIPPlus™ 11i Portal

- ❑ All performance metrics visible through single portal
- ❑ Parameter based flags and dials highlight areas requiring attention
- ❑ Notifications to staff available through portal
- ❑ Real time portal reflects updates as they are made in your data repository
- ❑ Robust and secure portal supported by Oracle’s award winning 10g core technology stack
- ❑ Multi-dimensional hierarchically organized data model to support pivoting and drilling into your data
- ❑ Drill to detail from summarized General Ledger data to detailed account level data
- ❑ Full charting functionality
- ❑ Export data from portal to existing analytical models
- ❑ Publish data from the portal for Board, ALCO and Management reporting
- ❑ Archive published reports within the EBIPPlus DSE environment
- ❑ Scalable web delivery architecture
- ❑ Security delivered via a virtual private database (VPD) infrastructure



### Business Intelligence Hub

- ❑ Recognize that different reporting users like their data delivered in different ways
- ❑ For analysts provide interactive reporting framework delivering rich functionality, pivoting, drill to detail
- ❑ For line users provide data extract to feed existing financial modes
- ❑ For management users provide intuitive, easy to use information dashboard with parameter based flag and dials to highlight performance to target



- ❑ Publish regulatory, board and management reporting packs containing tables, charts and commentary

### Analytics Server

- ❑ Define business data enrichment processes via excel based smart templates.
- ❑ Develop process workflows to define daily, weekly and monthly end-to-end processes across application
  - ❑ Move focus from application based processing to metric based processing
  - ❑ Register custom code and save run-time parameters for inclusion in workflow
  - ❑ Include dependencies for serial or parallel processing
  - ❑ Email/SMS notifications in workflow definition



### Planning Hub

- ❑ Consolidate spreadsheet based forecasting activities with OLAP budgeting tools using a single interface
- ❑ Merge P&L and Balance Sheet forecasting activities
- ❑ Improve forecasting accountability by closing the loop between actual and forecast/budget metrics
- ❑ Include notifications to support the forecasting cycle in the EBIPPlus portal
- ❑ Drag and drop pivot table reporting and forecasting

### Foundation Services

- ❑ Manage migration of business rules and reports between environments
- ❑ Manage leaf and hierarchy maintenance using spreadsheet utility
- ❑ Performance optimizer reports, recommends and implements performance enhancing strategies providing up to 60% improvement
- ❑ Daily process automation across modules and applications
- ❑ Register custom code and save run-time parameters for inclusion in Analytics Server workflows
- ❑ Define and create custom metadata via intuitive excel based spreadsheet upload

### Rapid Business Accelerators

- ❑ Bring forward your benefits realization by fast tracking your OFSA implementation using pre-built algorithms, business rules, reports and workflows
- ❑ Reduce your implementation costs by up to 90%
- ❑ Retain the full functionality and flexibility of OFSA
- ❑ Load your own structures ensuring that you are not forced to conform to standard reporting or enrichment structures
- ❑ Leverage Oracle Business Intelligence tools and pre-built EBIPPlus multi-dimensional reports
- ❑ Leverage OFSA11i for profitability processing while using OFSA45 for Risk and Budgeting modules
- ❑ Seeded enrichment algorithms include:
  - Component based Funds Transfer Pricing
  - Net Interest Margin
  - Multi-dimensional Profitability
  - Scenario based Gap and Liquidity
  - Cash Flow current position
  - Market Value
  - Stochastic VaR and EaR

### Applications Migration Workbench

- ❑ Upgrade your existing OFSA45 implementation to OFSA11i using EBI Migration
- ❑ Leverage OFSA11i for profitability processing while using OFSA45 for Risk and Budgeting modules
- ❑ Automated review of custom code and reports to identify areas requiring re-mapping in the upgrade cycle
- ❑ Automated upgrade of most OFSA ID's from OFSA45 to OFSA11i
- ❑ EBIPPlus portal mapped to both OSFA45 and OFSA11i data models
- ❑ Workflow mapped to both OFSA45 and OFSA11i data models



---

CamArch Group  
Suite 4, 80 Upper Pitt Street  
Kirribilli NSW 2061  
Australia

**Worldwide enquiries:**

Australia +61 2 8003 4305  
United Kingdom +44 (0)20 8133 8402  
West Coast USA +1 626 593 7194  
East Coast USA +1 718 395 1783  
Internet:  
<http://www.camarch.com.au/>

---

To offer our customers the most complete and effective information management solutions, CamArch offers its products along with support, education, and consulting globally.

Other company and product names mentioned are for identification purposes only, and may be trademarks or their respective owners.

Copyright © CamArch 2008  
All Rights Reserved  
Document Version 4.0

*EBIPlus*, *EBIAnalytics Server*, *EBIIntelligence Hub* & *EBIPlanning Hub* are trademarks of the CamArch Corporation.

Further Information on the range of CamArch products is available at

<http://www.camarch.com.au/solutions/ebiplus11i.htm>

